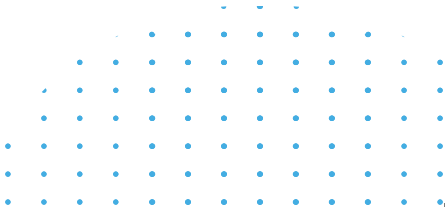


KOMPRES[®]

HANDBOOK

Content:

Introduction	1
Important safety information	2
Controls and display	3
Operating instructions	3
Basic principles	3
Before use	4
Warnings	5
Essence of the product	6
Maintenance	7
Specification of product	7
System information	7
Product dimensions	7
Storage	7
Repair service information	8



Introduction

“Congratulations on your purchase of the air pressure therapy device Kompre!”

We are glad that you chose our product and we hope you will be satisfied with it. In this handbook you can find more information about the safe use of the product. The regeneration is an essential part of the training process and lot of athletes realize it. The sport performance is affected by various factors and the fast and full recovery is one of them that can be improved. Even if you do not do any sports you can appreciate benefits of our product. Teachers, nurses and many other professions where people spend a lot of time on their feet could use the good regeneration.

Our primary goal is to offer to our clients the top product therefore we only use the durable, high-quality material, that provides the long-lasting and comfortable use. The package contains the device with the pump and leg sleeves that are divided into four air chambers. The air chambers are filled with air and compress the muscles which increase the blood circulation. The using of the device is very simple and everybody can handle it. We believe our product can help you fulfil your goals whether in sports, in work or in personal life. In case you will not find all information in this handbook, do not hesitate, please, to contact us!

Team Kompre

Important safety information

Symbol	Definice
	Read the handbook before using.
	Read the handbook before using.
	The garments is type BF-Applied part.
IP21	Device case protective class.
	Separate collection for waste electrical and electronic equipment. Please dispose of the device/accessory/packing in accordance with the legal order in your country.
CE	CE mark showing compliance with EC Directive 93/42/EEC. Medical device directive.
	Warning: Indicates a situation in which the operator or the patient may be in danger of injury or death.
	Class II. equipment.
	Authorised representative in the European community.
	Manufacturer's name and address.

Controls and display



- 1. Program selection
- 2. Pressure
- 3. Duration
- 4. Chambers selection
- 5. Start/Stop
- 6. Turn On/Off

Operating instructions

Basic principles

The device is connected by a bundle of tubes to leg sleeves. Each leg sleeve is divided into 4 compression chambers. The compression and decompression is provided by the pump from toes towards the centre of the body. The decompression starts after each cycle. The duration of the massage can last 10, 20 or 30 minutes. You can also adjust the pressure according to your needs.

Before use

Prepare the leg sleeves as you can see in the picture n. 2 (see below). Connect the plug to the power supply, put on the leg sleeves and press Turn On on the device, which turns on the standby mode. Set up the duration, pressure and the program. Then press Start.



By pressing the Program selection on the device, choose the program A or B. You can see the description of both programs in pictures n. 3 and 4 below.

During the program A (picture n. 3) chambers are compressed and then decompressed separately one after the other.

Program B (picture n. 4) compresses each chamber one by one and then decompresses all at once.



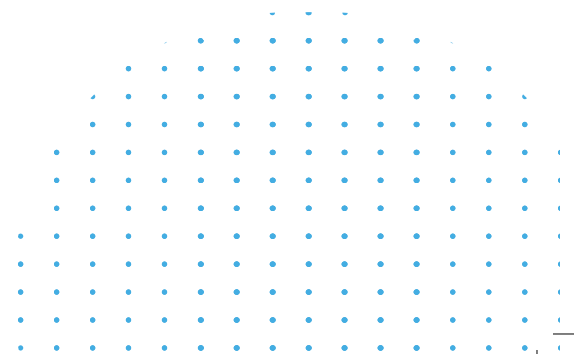
Warnings

1. Read the manual before use. Follow all instructions contained in this manual.
Use the device only as indicated and for the stated purposes only.
2. Do not apply the leg sleeves to bare body, use the loose and soft clothes.
3. Zip up the leg sleeves well before pressing Start button and do not unzip it before the device stops.
4. After finishing the treating course, make sure to follow this process to avoid any machine damage or injury: Turn Off the device - pull out the hose connector from the pump - take off the leg sleeves - pack the leg sleeves.
5. The Electromagnetic radiation of this machine meets IEC60601-1-2 EMC regulations. Please do not use it in the strong Electromagnetic radiation environment and maintain at least 40 cm distance from cardiac pacemaker when using in the same time.
6. While plugging or unplugging the power cord, please ensure there is enough open space around the socket and there are no obstacles. This will ensure that you can unplug the power cord quickly in case of emergency.
7. Warning of unauthorized modification. Any unauthorized modification is prohibited such as:
 - a. No modification/alteration of this device is allowed and if any modification is done the warranty shall be void.
 - b. Do not try to modify this device without authorization of the manufacturer or distributor to ensure it meets the all standards.

- c. If this device is modified, appropriate inspection and testing must be conducted to ensure the safety.
 - d. Warranty is void in case of modification done by unauthorized personnel.
8. Do not use near heat or water source.
 9. While using, do not stand up or walk with the leg sleeves on. There is a hazard of falling down.
 10. If you experience pain during the massage, immediately stop using it and turn the device off.
 11. In the event of power failure, disconnect the leg sleeves from the pump and turn off the device.
 12. Keep out of reach of children and pets.
 13. Never use pins or any other metal fasteners with the device.
 14. Do not use on the soft surfaces such as on pillows, mattress, under blankets or under any other covers.
 15. Do not use in an environment where oxygen or sprays (containing aerosols) are handled.
 16. Never allow water to come into contact with the device. There is a risk of electric shock.

Essence of product

- Sport recovery
- Postoperative care
- Improvement of blood circulation
- Activation of the musculoskeletal system



Maintenance

Make sure you turn off the device and pull out the plug before cleaning. Use only soft dipped and wringed cloth to clean, do not use any liquids, do not brush or knead.

Specification of product

Specification of device

Outline dimension: 260x170x130 mm (LxWxH)

Weight: 2,5 kg

Power: 50 VA

Rated Voltage: AC 230 V, 50 Hz

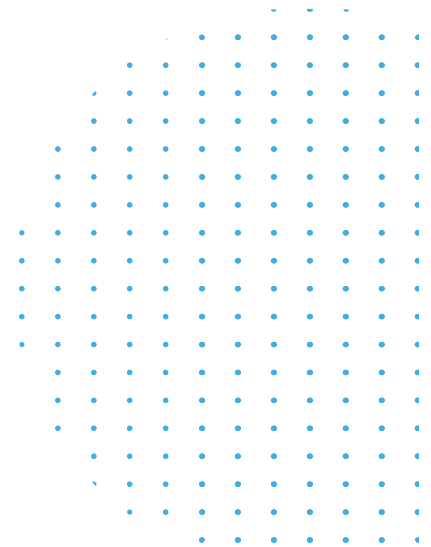
Pressure Range: 20-250 mmHg

Specification of leg sleeves

Size L:	Size M:
Length: 110 cm	Length: 100 cm
Width: 35 cm	Width: 30 cm

Storage

The device shall be stored in a clean, dry environment at a temperature of 15-25C.



Symptom	Possible cause	Corrective action
The pump will not turn on.	No electricity.	Check the electrical wall outlet to be sure that the pump is plugged into the outlet correctly. Check the circuit breaker to be sure there is power to the outlet.
	Damaged power cord.	Unplug the power cord and look for any damage or defects.
One garment inflates but the second one does not.	Tubing not connected or blocked.	Check the garment tubing to be sure they are connected to the pump and to the garment properly. Check the tubing for kinks, punctures, twists and/or folds.
	Damaged garment.	Check the garment for damage and leaks.
Regardless of the pressure setting the garments are applying a very low pressure.	Defective garment.	Check the garment for adequate connection to the device, leaks, kinks, punctures, twists and/or folds.
	An internal problem.	Contact your seller.
The device is making strange and/or loud noises.	Device is on an uneven or unstable surface.	Move to a more stable and even surface.
	An internal problem.	Contact your seller.



www.kompre.cz

